



Industrial Alarm Management by SMS and Email

# Introduction of Industrial Alarm Management by SMS and Email

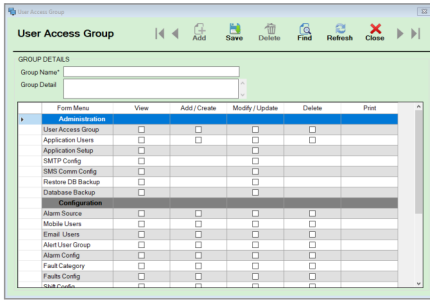
This Application helps Industry Users to get Alerts of Critical and Non Critical Alarms on their Mobile Phones via SMS and Email. Application is settable to even Escalate the Alarm up to 2 Levels of Groups. Admin can set Customized Alarm Text in the Application. This Application works with MS SQL, OPC UA, OPC DA and OPC AE to trap Alarms. Complete Alarm Log along with pending Log is stored. SMS can be sent using GSM Modem or Web Based SMS System. Background Service will continuously monitor the Tags and update Tag Values. SMS Schedule Configuration is also available where Tags will be Grouped for sending SMS. Various Reports are available in Application. This Application is useful in Pharma & Biotech, Process Automation, Water and Waste Water Management, Oil & Gas, Factory Automation, EMS and BMS etc. Industries.



## Salient Features:

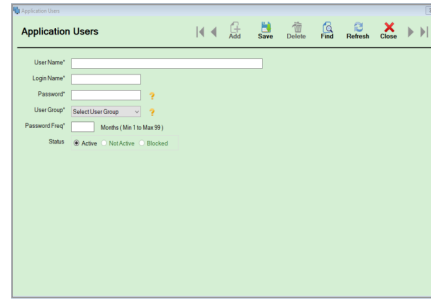
- ♦ Very Useful for getting Critical and Non Critical Alarms generated via SMS and Email to Users
- ♦ Multiple Users and Groups Configurations
- ♦ Interface with SQL and OPC Servers
- ♦ Alarm SMS can be sent via GPS Modem or Web Based SMS
- ♦ Analog and Digital Alarms Configuration
- ♦ User Defined Alarm Message
- ♦ SMS Monitoring and Management
- ♦ 2 Levels of Escalations
- ♦ Voice Alarm Option is also Available
- ♦ Application Diagnostics available for Debugging
- ♦ Alarm Scheduler
- ♦ Alarm Log Management
- ♦ Critical and Non Critical Alarm Management
- ♦ Complete Solution with Model / Web Based SMS will be provided.
- ♦ Installation & Training will be provided.

## User Access Group



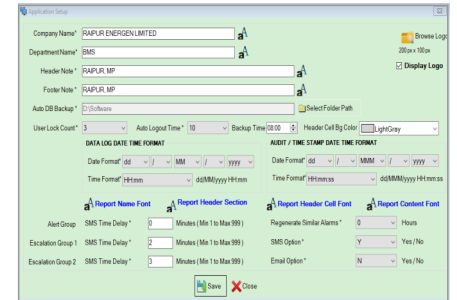
Group Access Rights can be assigned like View, Add, Modify, Delete and Print. Various User Groups can be created and each can be assigned different access rights.

## Application Users



Admin can create various Users to this Application by defining User Name, Login Name, Password etc. Users can be mapped with Group and their Password Change Frequency interval can be defined along with Status of the User.

## Application Setup



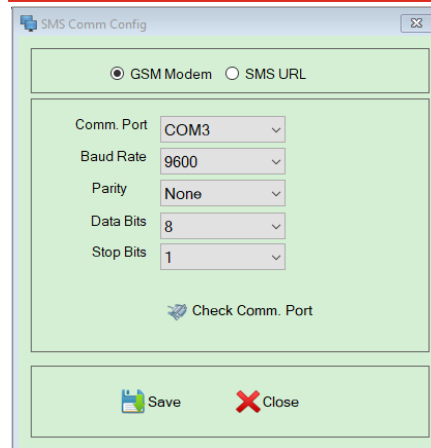
Various required configuration for Application Setup can be defined here. Client Information along with their Logo and Escalation Matrix Time Delay are some of the settings along with others.

## SMTP Configuration



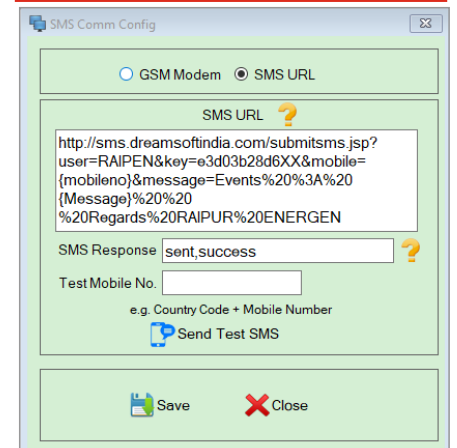
SMTP Details for sending emails from Client's Organization can be configured here. Alarm Notification Email will be sent using this email ID.

## SMS Comm Config (GSM Modem)



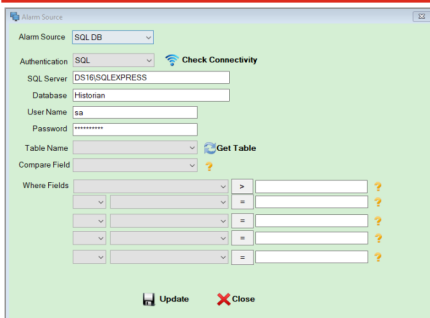
If Modem is used to relay Alarm SMS then Modem Settings can be done here. Modem with a SIM Card is the preferred option to relay Alarm SMSes.

## SMS Comm Config (SMS URL)



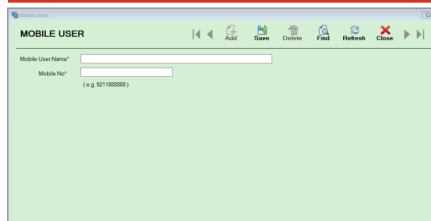
If Web Based API is used to relay Alarm SMS then that URL Settings can be done here. User will require Internet for this Option to relay SMS.

## Alarm Source Configuration



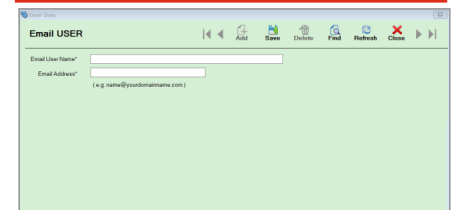
Source of the Alarm like OPC or SQL Database can be configured in this form. Connectivity can be checked and various settings w.r.to Alarm Source can be configured.

## Mobile Users



All Mobile Users with their Names and Mobile Nos. can be saved who are going to receive Alarm SMS.

## Email Users



All Email Users with their Names and Email Address can be saved who are going to receive Alarm by Email.

## Alert User Group

Various Alert Groups can be created from the users defined. Group Escalation Matrix is there for the Escalation.

## Alarm Configuration

Alarm Status, Customizing Alarm Message, Setting Alarm Priority along with assigning Alarm to Groups are function of this form.

## Import Alarms

Excel Templates are given in the Application which user can use to Import Alarms from Excel Sheet. Sample File with Data is also given for Explanations.

## Acknowledge Alarm

Log DateTime	Alarm Type	Tag Name	Alarm Message	Value	Priority	Shift	Action
2022-04-15 13:15	Alarm	TEMP HIGH	TEMP HIGH		1	Second Shift	Acknowledge
2022-04-15 13:15	Alarm	TEMP HIGH	TEMP HIGH		1	Second Shift	Acknowledge

User can Acknowledge Alarms here. All Alarm Details will be shown.

## Alarm Analysis

Different Reports with Filters are given for Alarm Analysis.

## Audit Analysis

User Audit Trail Report with Filters and Date Range.

## SMS Testing

Manual SMS Relay for Testing or sending Messages to Users

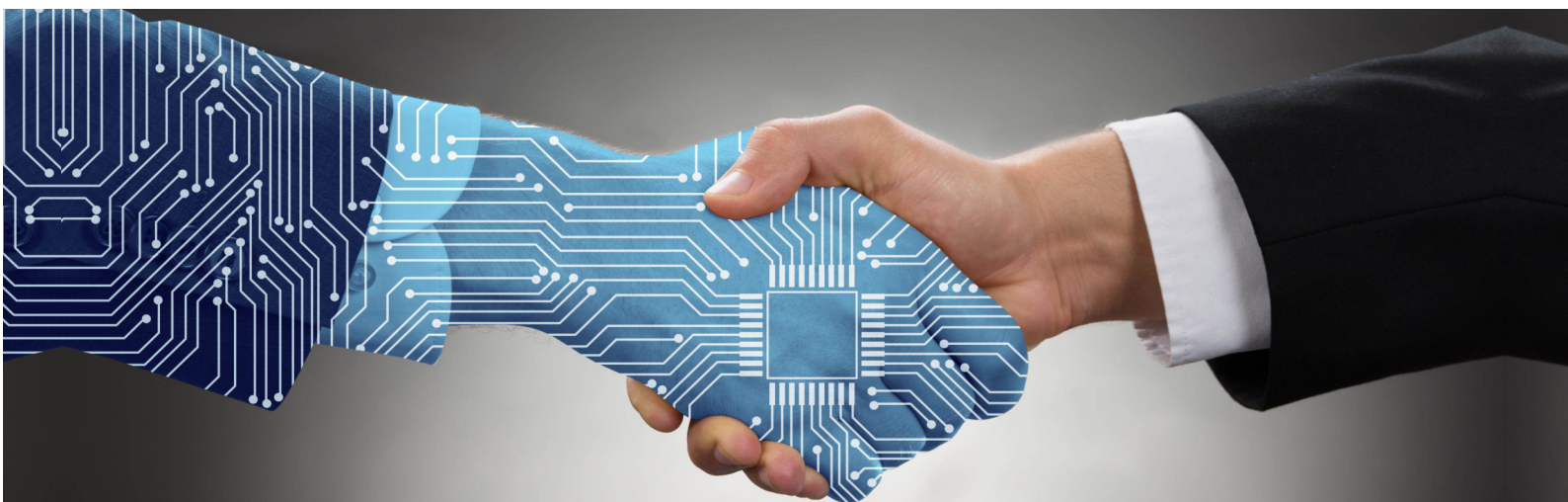
## System Diagnostics

Sr. No.	Parameter	Value	Last Update DateTime
1	Service Status	CONFIGURATION PARAMETERS (OnStart)	2022-04-15 18:00:44
2	Source Status	Login failed for user "sa"	2022-04-15 18:52:22
3	Tag Status	TAG CHANGE FOUND=0	2022-04-15 18:52:22
4	Email SMS	EMAIL SMS POLLING	2022-04-15 18:51:50
5	SMS Connection	-	2022-04-15 18:00:42
6	SMS Status	SMS TO= 8378044487 SUCCESSFUL	2022-04-15 18:01:45
7	Email Status	-	2022-04-15 18:09:42
8	Backup Status	-	2022-04-15 18:00:42
9	Task Poll	-	2022-04-15 18:00:42

System Diagnostics Form with log of events of Background Service activities.

## Change Password

Change Password Screen



We are Proud to be associated with System Integrators...



Zelenka Successfully Running at...



Powered by :





zelenka®



105/106, Hinal, Datta Mandir Road,  
Dahanukarwadi Junction, Kandivali (West),  
Mumbai-400067. India

+ 91-22-28672925

+ 91-22-28693249

+91-7208422044

+91-7710013322 (Sales)

+91-9870310606 (Nirav Buch)

sales@dreamsoftindia.com/ info@dreamsoftindia.com

<https://www.dreamsoftindia.com>

<https://www.zelenkareports.in>