

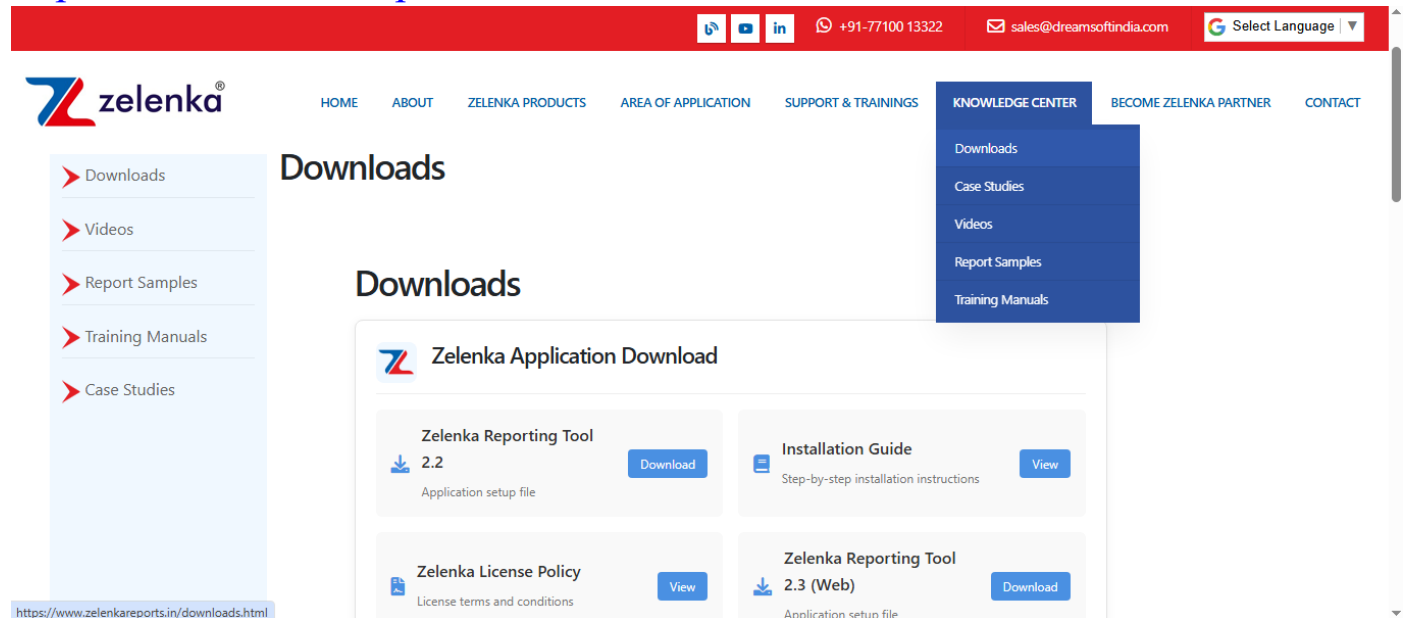
SOFTWARE INSTALLATION PROCEDURE

- 1) PREREQUISITES – WINDOWS 10, MIN 8 GB RAM, MIN 500GB STORAGE, INSTALL ASP.NET CORE 8.0 RUNTIME CHECK BELOW LINK. WHILE INSTALLING IN SYSTEM USER SHOULD HAVE ALL THE ADMINSTATOR RIGHT.

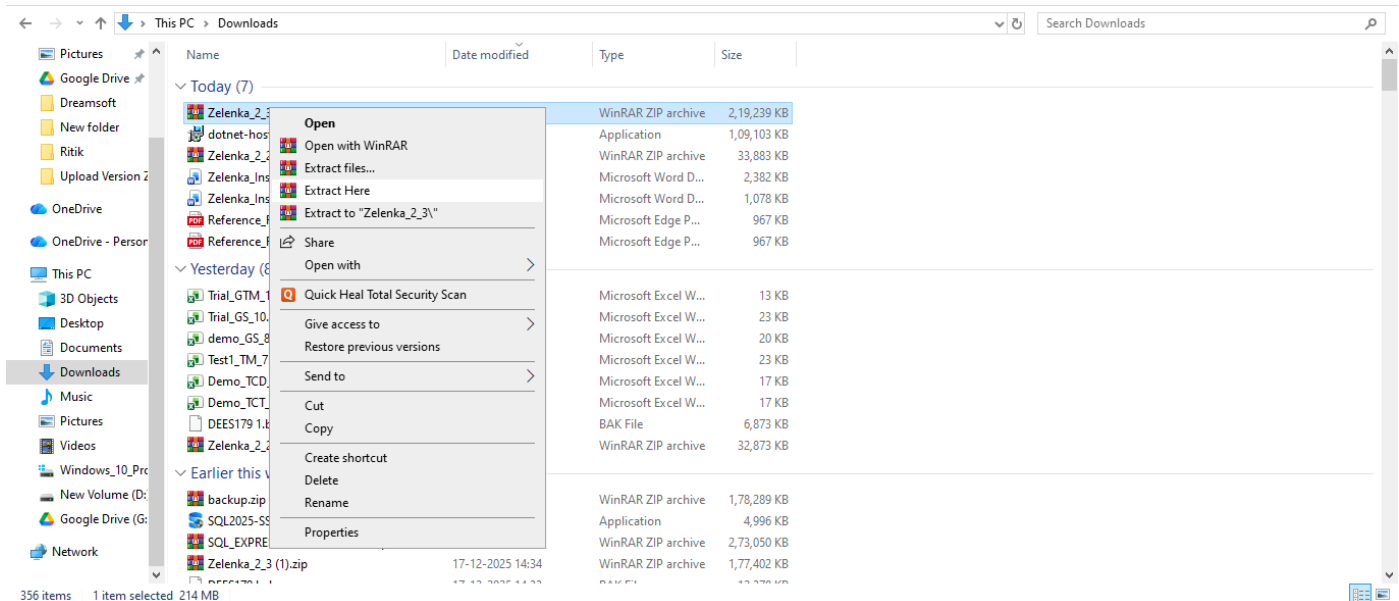
- ASP.NET CORE 8.0 RUNTIME (V8.0.15) - WINDOWS HOSTING BUNDLE INSTALLER LINK: - [HTTPS://DOTNET.MICROSOFT.COM/EN-US/DOWNLOAD/DOTNET/THANK-YOU/RUNTIME-ASPNETCORE-8.0.15-WINDOWS-HOSTING-BUNDLE-INSTALLER](https://dotnet.microsoft.com/en-us/download/dotnet/thank-you/runtime-aspnetcore-8.0.15-windows-hosting-bundle-installer)

- 2) WE NEED TO DOWNLOAD THE APPLICATION SETUP FROM THE LINK BELOW.

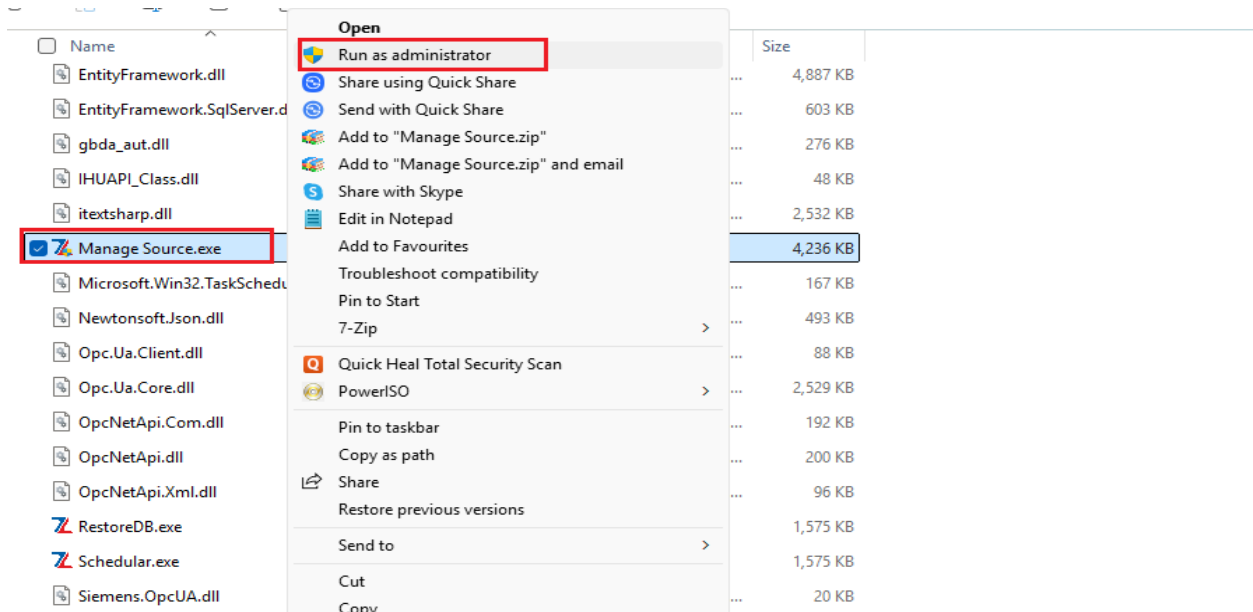
<https://www.zelenkareports.in/downloads>



- 3) RIGHT CLICK ON DOWNLOADED ZIP AND SELECT **EXTRACT HERE** OPTION. UNZIP THE FOLDER INTO SECONDRY DRIVE WHERE USER WANT TO SAVE IT.



- 4) RUN THE **MANAGE SOURCE.EXE** WHERE USER SAVE THE EXTRACTED FILE
\\ZELENKA_WEB\\WWWROOT\\DATA\\ZELENKA_CONFIG\\MANAGE SOURCE.EXE



- 5) IN **MANAGE SOURCE** UTILITY MODIFY SQL DETAILS TO CONNECT DATABASE WITH APPLICATION.

- INSERT THE HIGHLIGHTED DETAILS IN TEXT BOX

MANUAL SOURCE MAPPING

Source Type:

Close


SQL OPC DA OPC HDA SQL CSV PROFICY HISTORIAN MS ACCESS / SQL LITE


Source Config:

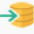
Authentication : SQL **SQL Server : DS23\\SQLSERVER2022**

UserName : sa **Password : DSmicro29**

DataBase : NEProduction


Authentication*  **Check Connectivity**


SQL Server* 

Database* 

User Name*

Password*

Port* 

 **Update**

- CLICK ON CHECK CONNECTIVITY BUTTON TO CHECK THE CONNECTION WITH SQL SERVER.

MANUAL SOURCE MAPPING

Source Type Close

SQL OPC DA OPC HDA SQL CSV PROFICY HISTORIAN MS ACCESS / SQL LITE

Source Config

Authentication : SQL **SQL Server :** DESKTOP-NU4GC3S\SQLEXPRESS_2017

UserName : sa **Password :** DSmicro29

DataBase : Aureole_1_0

Authentication* Check Connectivity

SQL Server*

Database*

User Name*

Password*

Port* ?

Update

Manage Source

i DATABASE CONNECTION SUCCESSFUL

OK

- CLICK ON UPDATE BUTTON TO SAVE RECORD AND THEN CLICK ON OK BUTTON.

MANUAL SOURCE MAPPING

Source Type Close

SQL OPC DA OPC HDA SQL CSV PROFICY HISTORIAN MS ACCESS / SQL LITE

Source Config

Authentication : SQL **SQL Server :** DESKTOP-NU4GC3S\SQLEXPRESS_2017

UserName : sa **Password :** DSmicro29

DataBase : Aureole_1_0

Authentication*

SQL Server*

Database* →

User Name*

Password*

Port* ?

Update

Manage Source

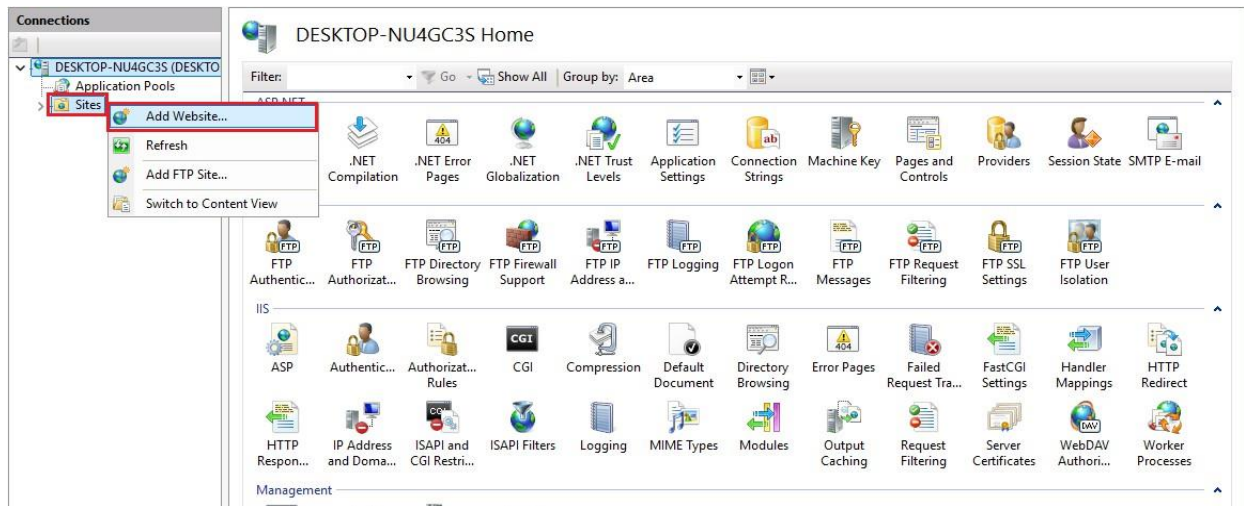
i RECORD UPDATED SUCCESSFULLY

OK

- 6) OPEN IIS MANAGER TO ADD THE APPLICATION ON WEBSITE. IF IIS MANAGER IS NOT INSTALLED THEN REFER THE BELOW LINK TO SETUP FOR IIS INSTALLATION.

LINK - <https://jotelulu.com/en-gb/support/tutorials/how-to-install-iis-on-windows-10/>

- RIGHT CLICK ON SITES AND SELECT ADD WEBSITE...



Add Website

Site name: Application pool:

Content Directory

Physical path:

Pass-through authentication

Binding

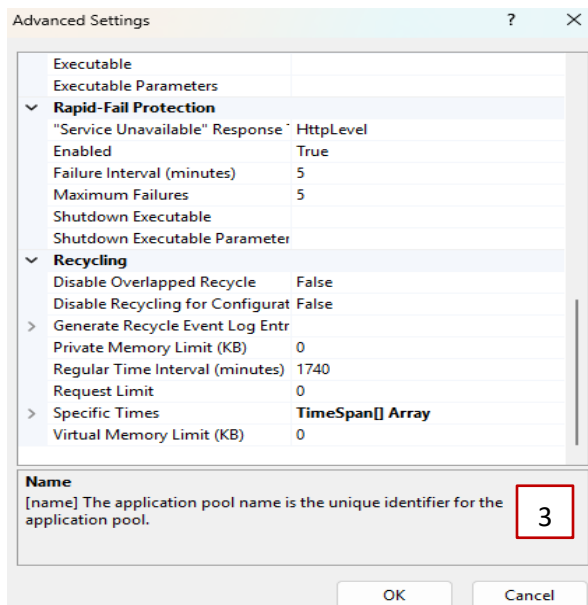
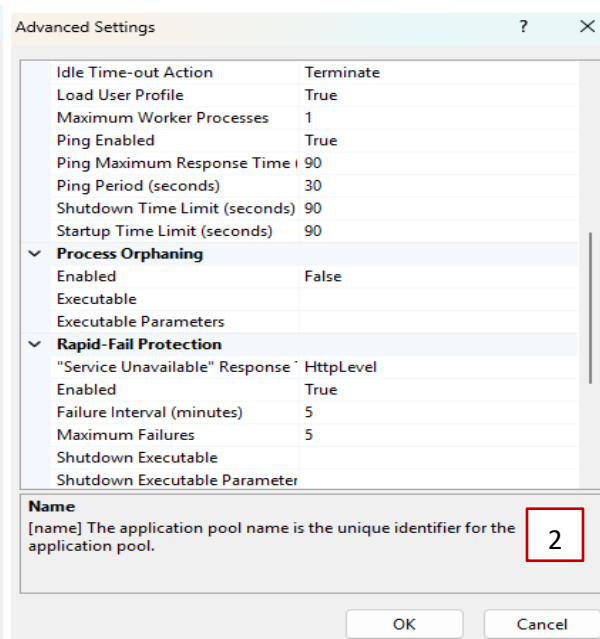
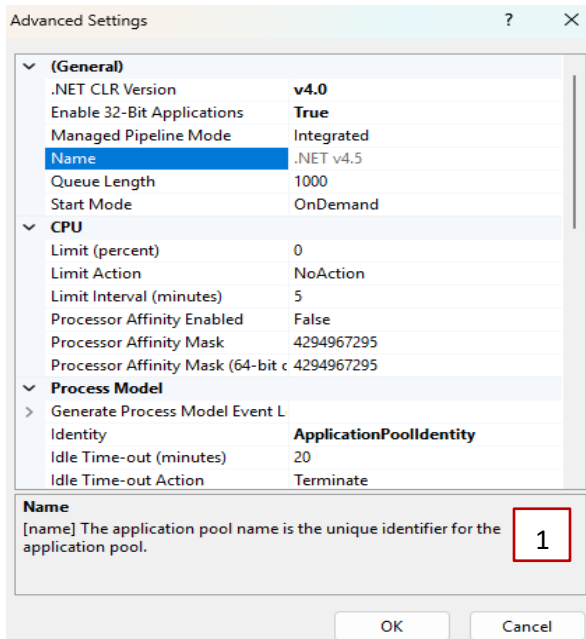
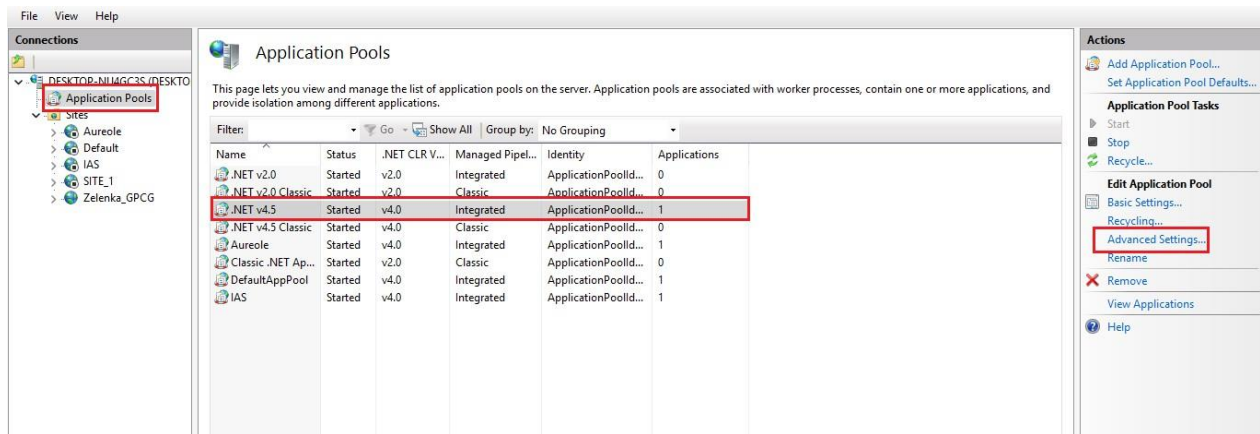
Type: IP address: Port:

Host name:

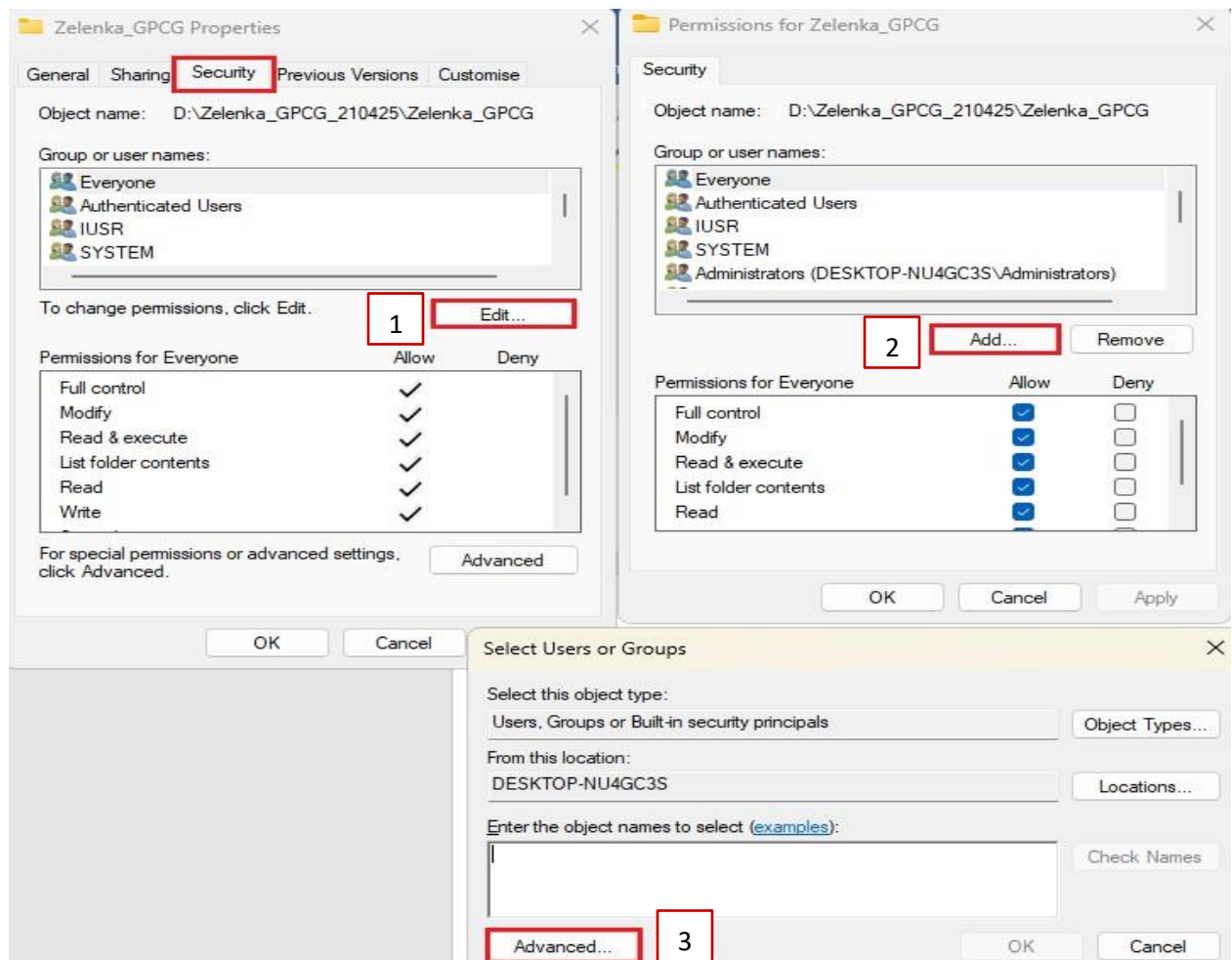
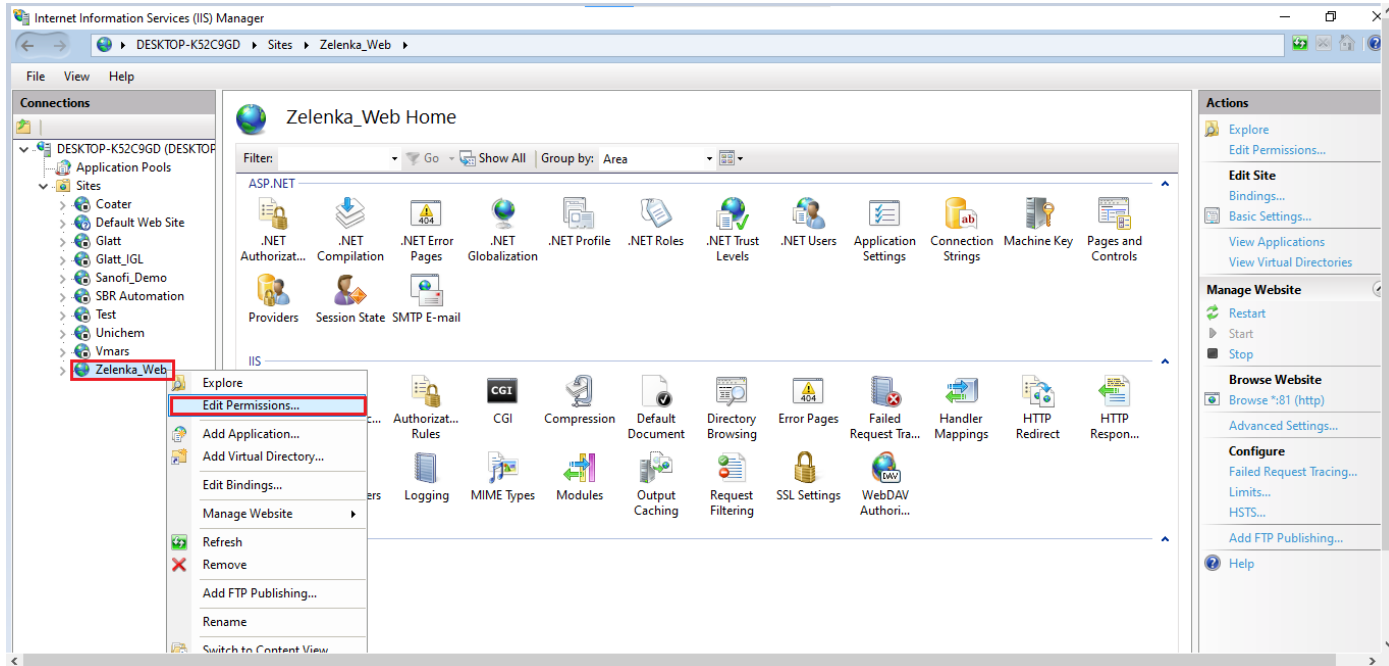
Example: www.contoso.com or marketing.contoso.com

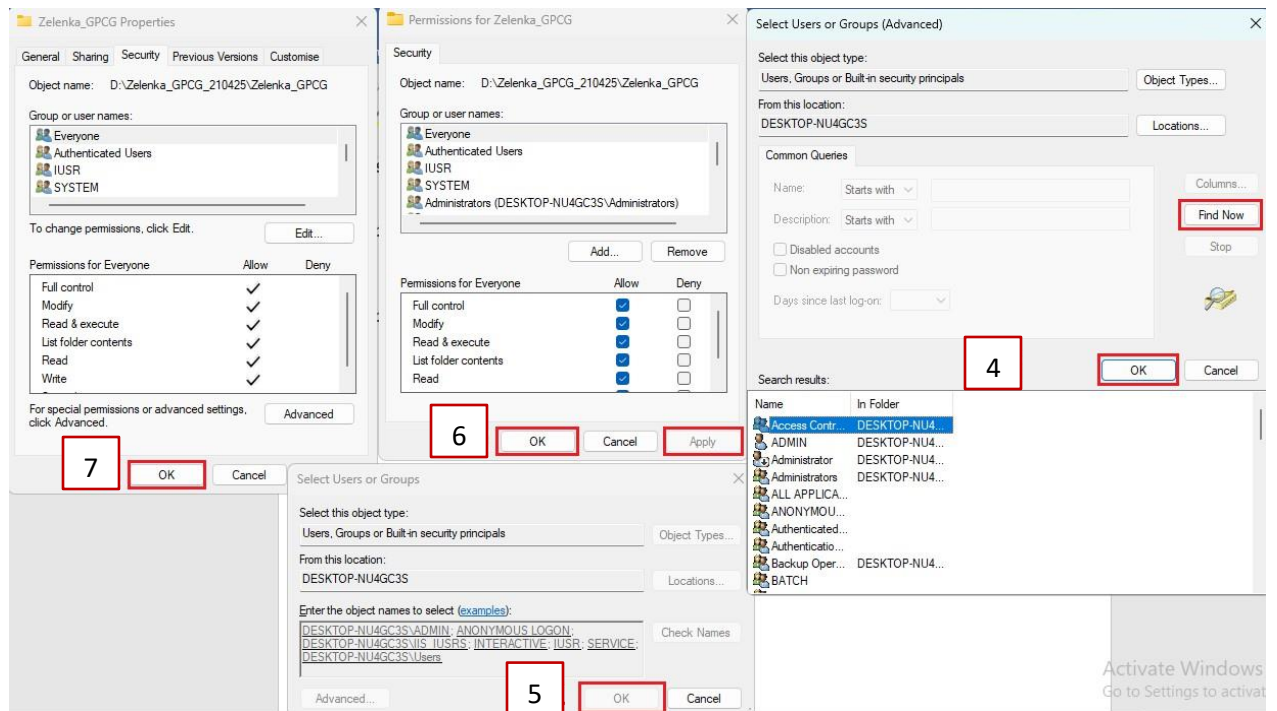
☒ Start Website immediately

Assign Port No. as per your Requirement

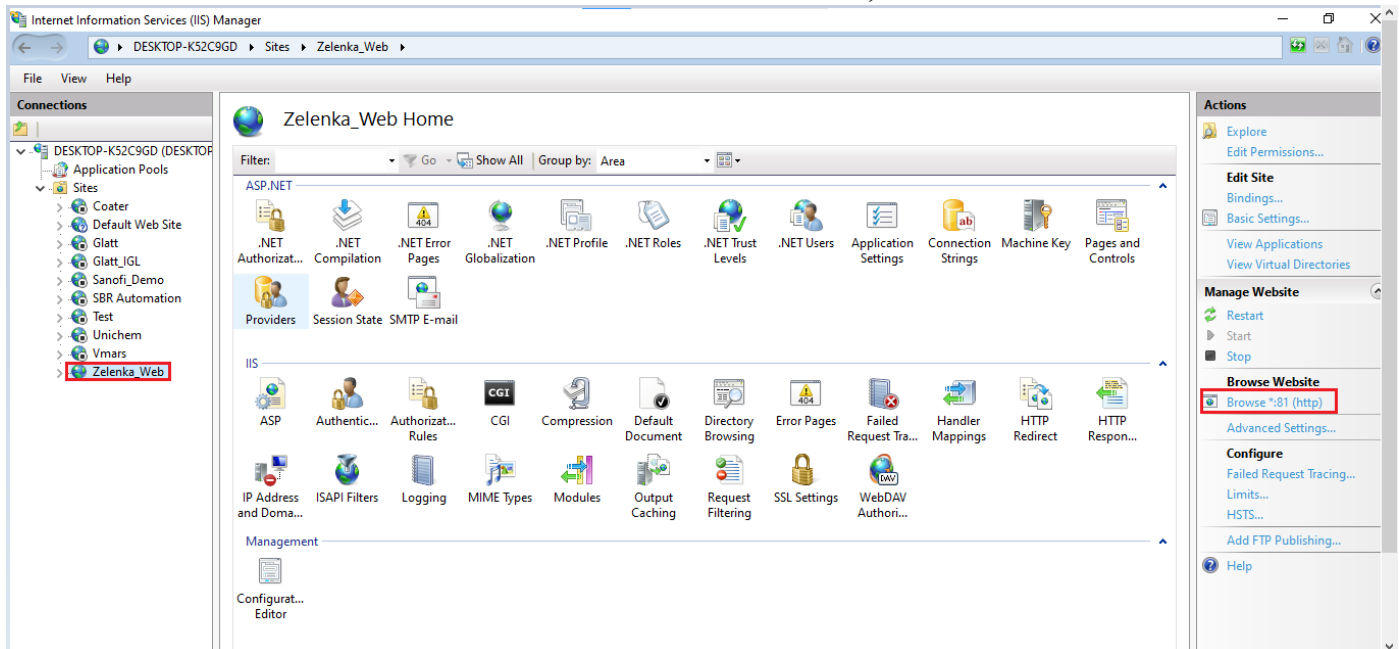


- USER HAVE TO GIVE PERMISSION OF ANONYMOUS LOGON, IIS IUSER, SERVICE, USERS AND REMAINING PERMISSION ADD BY DEFAULT.





7) GO TO WEB BROWSER (GOOGLE CHROME/MICROSOFT EDGE, ETC) AND TYPE LOCALHOST AND ENTER, MAIN PAGE WILL OPEN. (**LOCALHOST:81** OR **ACCESS THE APPLICATION FROM IIS MANAGER**)





Copyright © 2025

Copyright © 2025